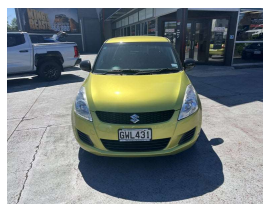


2013 Suzuki Swift GL 1.4 Hatch Manual



VEHICLE INFORMATION

Cash Price

Includes GST

\$8,990

Finance this vehicle
from only

\$48.10

per week*

Gain peace of mind
with Mechanical
Breakdown
Insurance. Ask us
how.

Body

Hatchback

Odometer

103,078 km

Engine

1372 cc

Fuel Type

Petrol

Transmission

Manual

Fuel Saver Rating

3.00 out of 6 stars

VIN

JSAFZC82S00129964

Reg No.

GWL431

Ext Colour

Yellow

History

-

Seats

5 seats

Interior

-

Audio

-

Stock ID

4230

Features / Comments

Stand out from the crowd in this awesome Green Manual Suzuki Swift. A great car to learn to drive in, would be an awesome first car! Easy to park, NZ new,

1.4-liter, 4-cylinder petrol engine

70 kW (94 hp) at 6000 rpm

130 Nm at 4000 rpm

4-speed automatic

Front-wheel drive

Fuel Economy: Approximately 6.2 L/100 km (combined)

Safety: 5-star ANCAP rating

Manual air conditioning, power windows, and a basic audio system with USB

Masterton

Phone 0800 ECLIPSE, Email office@wairarapamitsubishi.co.nz

313 Queen Street, Masterton

*Finance calculation based on a 60 month term, no deposit and with an example annual fixed interest rate of 11.95%. Actual interest rate may be higher or lower. Includes an establishment fee of \$390 and a monthly maintenance fee of \$0.00. Full term amount payable of \$12,505. Estimate only, not an offer of finance. Terms, conditions and lending criteria apply.